



YOSHIMURA

RESEARCH & DEVELOPMENT OF AMERICA, INC.

5420 DANIELS STREET STE A, CHINO CA., 91710 · (800) 634-9166 · (909) 628-4722 · FAX (909) 591-2198

www.yoshimura-rd.com

Signature Series

Qualified Manufacturer Declared "Replacement Part"

2015~2018

Yamaha Raptor 700

338800C350 (SS/AL)

RS-2 Stainless Steel Full-System



Signature Series systems are:

- CARB/EPA tail-pipe emissions compliant.
- Marked with appropriate EPA noise labels.
- Independent laboratory tested for EPA new vehicle noise compliance.

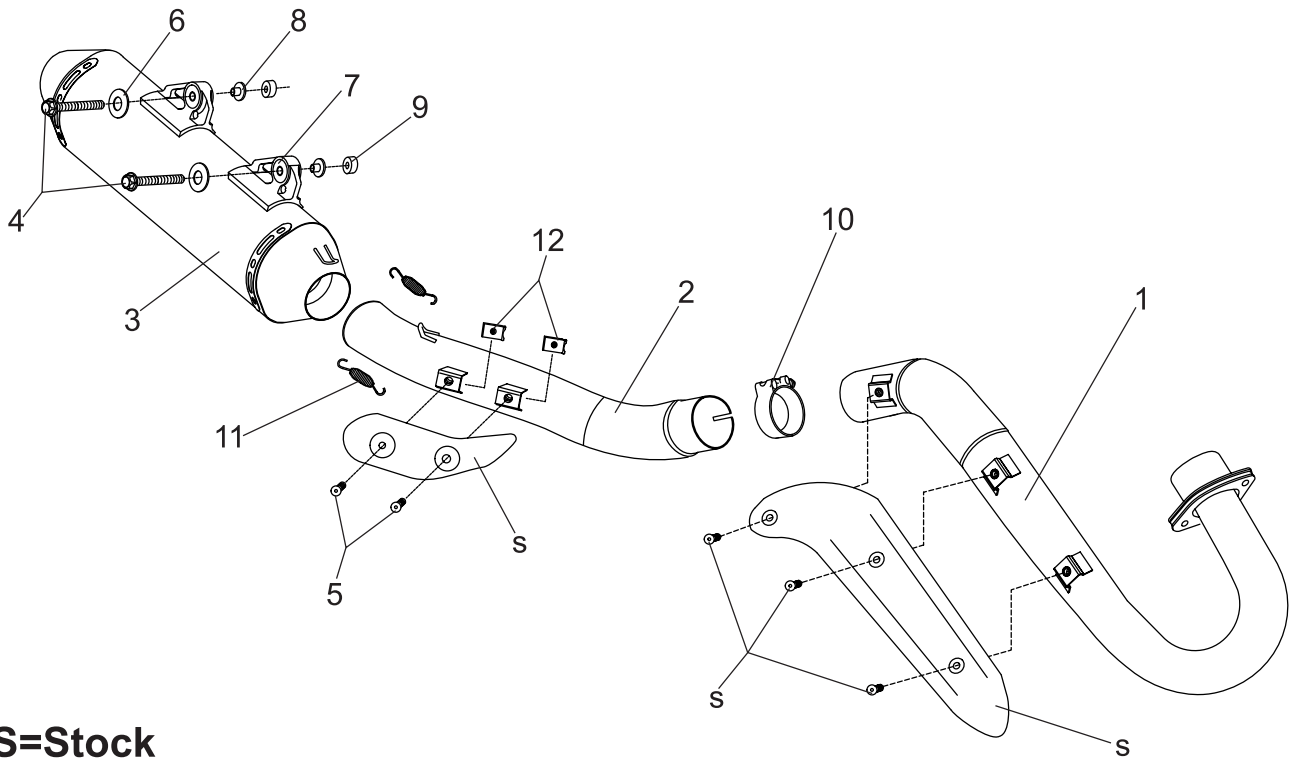


CAUTION: The muffler packing on this system **MUST** be replaced every 6-8 hours of use, or after each moto. Failure to follow recommended muffler re-packing interval can cause muffler damage and may void the warranty.



NOTE: IN THE STATE OF CALIFORNIA, IT IS ILLEGAL TO MODIFY THE EMISSION CONTROL SYSTEM, WHICH INCLUDES THE CARBURETORS OF ANY VEHICLE.

Assembly Diagram



S=Stock

No.	Item	Description	Qty.
1	33880-101	Yoshimura Header	1
2	2388-144-A	Yoshimura Tailpipe	1
3	2388513-RMA	Yoshimura Muffler Assembly	1
4	M8X45H	8mm x 45 mm Flange Hex Head Bolt	2
5	M6X16BHS	6mm x 16mm Button Head Cap Screw	2
6	8MMWASHERL	8mm Large Washer	2
7	011257-00	Rubber Bushing	2
8	ALS-001	Aluminum Spacer	2
9	8X10SPC	Aluminum Spacer	2
10	20060	Exhaust Clamp	1
11	RACE-SPS-1	Medium Spring	2
12	M6X1U	U-Nut	2
**	347PLUG	Wash Plug	1
**	ST-200	Spring Puller Tool	1
**	17029	Sticker Kit Sheet	1

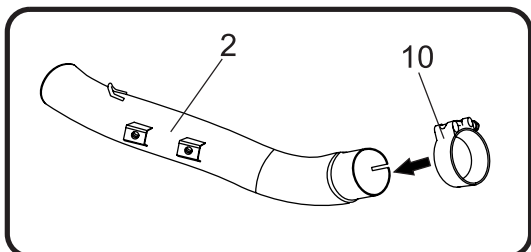
Removal

1. Loosen the stock exhaust clamp between the header and muffler tailpipe.
2. Remove the small muffler tailpipe heatshield.
3. While securely supporting the stock muffler, remove the two muffler mount bolts and carefully remove the stock muffler assembly.
4. Remove the large header heatshield.
5. Remove the two header nuts and carefully remove the stock header.

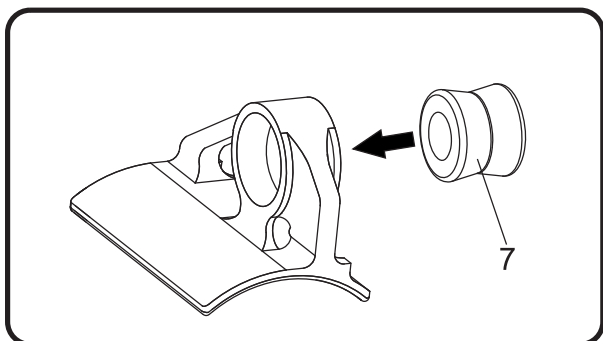
Note: The stock exhaust gasket will be re-used with the Yoshimura exhaust system. Inspect and replace if necessary.

Installation

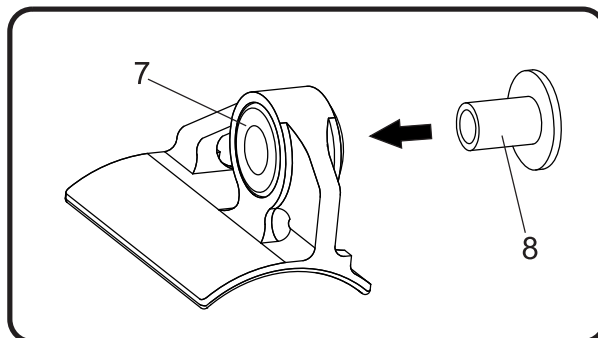
1. Install (No. 1) 33880-101, Yoshimura header using the stock header nuts. Do not torque at this time.
2. Slide (No. 10) 20060, exhaust clamp over (No. 2) 2388-144-A, tailpipe inlet and install tailpipe over header outlet. Do not torque exhaust clamp at this time.



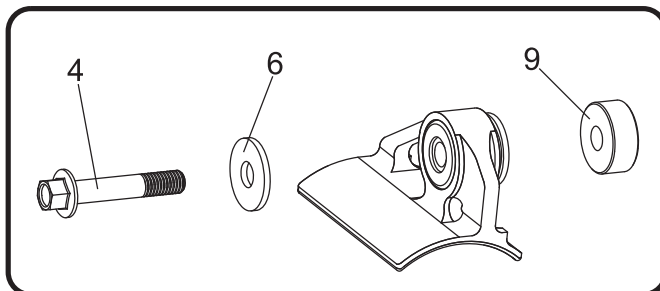
3. Install (No. 7) 011257-00, rubber bushings into muffler brackets.



4. Install (No. 8) ALS-001, aluminum spacers into (No. 7) 011257-00, rubber bushings as shown. See assembly diagram for proper orientation.



5. Install (No. 3) 2388513-RMA, Yoshimura muffler assembly onto (No. 2) 2388-144-A, tailpipe outlet and secure to subframe using the (No. 4) M8X45H, bolts, (No. 6) 8MMWASHERL, washers, and (No. 9) 8X10SPC, aluminum spacers.



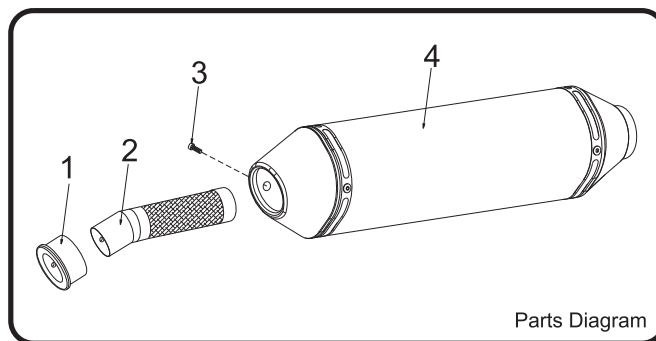
6. Torque (No. 4) M8X45H, bolts to factory specification.
7. Torque header nuts to factory specification.
8. Torque (No. 10) 20060, exhaust clamp to 8.5 Nm (0.86 kg-m, 6 ft-lb).
9. Install (No. 12) M6X1U, U-Nuts onto tailpipe heatshield brackets.
10. Install the stock tailpipe heatshield onto tailpipe using (No. 5) M6X16BHS, button head screws.
11. Install the stock header heatshield onto header using the stock heatshield screws.
12. Install (No. 11) RACE-SPS-1, medium springs between muffler and tailpipe.

13. Before starting vehicle, check for proper clearance between new exhaust system and rear suspension (i.e. tire, control arm, brakes, rear shock, and etc.) If any problem is found, please carefully follow through the installation steps again. If problem still persists, please call Yoshimura Tech Department at (800) 634-9166 / in CA (909) 628-4722.

14. It is recommended that the muffler and tailpipe be wiped down with rubbing alcohol to remove oil and fingerprints. This will help prevent tarnishing of the finish after the exhaust is heated up.

Note: After starting vehicle, it is normal for new exhaust system and muffler to emit smoke until oil residue burns off.

Spark Arrester Cleaning Information



Parts Diagram

NO.	DESCRIPTION	QTY
1	Aluminum Ring	1
2	Spark Arrester	1
3	Spark Arrester Securing Bolt	1
4	Muffler Assembly	1

Caution: Muffler can be extremely hot. Let muffler cool down before removing spark arrester.

Note: Read through all instructions before beginning disassembly.

Tools Required:

3mm Allen Key • Wire Brush • Pair of Gloves
Safety Glasses

Cleaning Steps:

- 1 Using a 3mm Allen key, remove the bolt that secures the aluminum ring and spark arrester to the muffler (see Parts Diagram for location).
- 2 Remove the spark arrester from the muffler.
- 3 Using a wire brush, remove carbon deposits from spark arrester screen. Inspect the screen for excessive wear or damage. If spark arrester is excessively worn or damaged, the spark arrester must be replaced. Cleaning and inspection should be performed after every 60 hours of use.

CAUTION: Gloves and safety glasses should be worn while cleaning spark arrester.

- 4 Re-install spark arrester and aluminum ring. Torque the spark arrester securing bolt to 1.0 kg-m (7.3 lb-ft).

NOTE: It is recommended that a low strength "Loc-tite" is used on the spark arrester securing bolt.